



Estd. 1973
50+ Glorious
Years of
Establishment

D.A.V. PUBLIC SCHOOL

SEC- 4, BOKARO STEEL CITY

**HAPPY
DIWAL**

Festival Of Lights

ॐ

ॐ



**HAPPY
CHHATH
PUJA**





Estd. 1973

50+ Glorious
Years of
Establishment

D.A.V. PUBLIC SCHOOL

SEC- 4, BOKARO STEEL CITY

HAPPY DIWAL

Festival Of Lights

🌞 Diwali & Chhath Puja Greetings from the Principal

Dear Children,

As we celebrate the sacred festivals of Diwali and Chhath Puja, may your lives be filled with light, joy, and positivity.

Diwali reminds us to light up not only our homes but also our hearts with goodness, knowledge, and compassion.



Chhath Puja teaches us the values of devotion, purity, and gratitude towards nature and the Sun, the source of all energy and life.

This festive season, enjoy the celebrations with your family and friends, but also remember to balance joy with responsibility and fun with studies.

True blessings come to those who work hard, stay disciplined, and respect everyone.

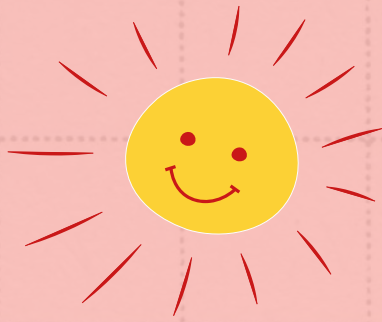
Let these festivals fill your days with happiness, laughter, and hope. 🌸 ✨

Stay safe, enjoy responsibly, study regularly and keep smiling always! 🌞

With love and blessings,

Your Principal (S.K. Mishra)





**THE BEST
PLACE FOR YOUR KIDS**

**ADMISSION OPEN
FOR SESSION
2026-27**

**HURRY
UP!**



NURSERY TO STD. II

ENROLL NOW

**REGISTRATION FORM
AVAILABLE ON OUR SCHOOL
WEBSITE**

www.dav4bokaro.org

**From 22.09.2025
to 28.11.2025**

Call To Find Out More : 9470347369

8210429583

7903207879

**LIMITED
SEATS**





DIWALI & CHHATH PUJA

Holiday HW SESSION- 2025-26

Take out a print of this Durga Puja Holiday HW for your ease of reference.

Do the HW in A4 size sheet and submit in Punch file or as instructed by your subject teacher.

1. Neatness and Presentation

Do your work neatly in your best handwriting.

Use margins, headings, and subheadings where necessary.

Draw or paste pictures/diagrams wherever asked.

2. Original Work

Avoid copying directly from books or the internet.

Express ideas in your own words. Creativity will be rewarded.

3. Timely Completion

Divide the work into small parts and do a little every day.

Don't leave everything for the last minute.

4. Subject-specific Instructions

English/Hindi/ Sanskrit: Write in complete sentences; follow grammar rules.

Maths: Show all steps of calculations clearly.

Science/Social Science: Label diagrams/maps properly.

Art/Project Work: Use clean sheets, colors, and decorate neatly.

5. Research and Reference

Use books, magazines, and the internet responsibly.

Write a short note on sources you referred to (if required).

6. Submission

Complete all parts of the HHW.

Check your work before submission.

Submit on the first day after the holidays without delay.

7. Reminder

Use this homework to revise what you have learnt. Balance study and rest—don't stress, but be consistent.



DIWALI & CHHATH PUJA

Holiday HW
SESSION- 2025-26

CLASS -7
ENGLISH

1. Prepare for UT III
2. Using clay/ Colours/ Thermocol make a pictorial representation of the lesson The Spider and the Fly on a cardboard
3. Complete Unit Achievers of Reader Book

HINDI

1. पाठ-13 और 15 के प्रश्न उत्तर को गृह कार्य कॉपी में लिखकर याद करे।
2. पाठ- 13 और 15 का अभ्यास सागर में पूरा करें।
3. ग्रीन पटाखों का इस्तेमाल और पटाखों के पर्यावरण पर प्रभाव को अपने अनुभव में दर्शाते हुए पोस्टर बनाएं। (A4 size paper)

अखबार, पत्रिकाओं या इंटरनेट से दुर्गा पूजा की तस्वीरें काटकर एक कोलाज बनाएँ।
जैसे: पूजा पंडाल, मूर्तियाँ, ढाक, अर्घ्य, सिंदूर खेला आदि।

SANSKRIT

शब्दरूप - वारि (H.W. पुस्तिका में लिखिए)
धातुरूप - कृ, स्था (H.W. पुस्तिका में लिखिए)
पाठ- षष्ठ पाठ (अभ्यास प्रश्नोत्तर) (H.W. पुस्तिका में लिखिए)

MATHS

chapter -7, w.s.-2, do question no 11 to 20, (2) chapter -9, do 3 questions from each w.s. (3) Activity 1, Sum of all angles of any quadrilateral is 360 degrees, (4) Activity 2, Sum of exterior angles of any triangle is 360 degrees.
Activity will do on A-4 size paper by using cutting and pasting method.



DIWALI & CHHATH PUJA

Holiday HW
SESSION- 2025-26

CLASS -7 SCIENCE

Do in holiday home work copy.

1. The correct way of making a solution of acid in water is to
 - (a) add water to acid.
 - (b) add acid to water.
 - (c) mix acid and water simultaneously.
 - (d) add water to acid in a shallow container.
2. Products of a neutralisation reaction are always
 - (a) an acid and a base.
 - (b) an acid and a salt.
 - (c) a salt and water.
 - (d) a salt and a base.
3. Turmeric is a natural indicator. On adding its paste to acid and base separately, which colours would be observed
 - (a) Yellow in both acid and base.
 - (b) Yellow in acid and red in base.
 - (c) Pink in acid and yellow in base.
 - (d) Red in acid and blue in base.
4. Phenolphthalein is a synthetic indicator and its colours in acidic and basic solutions, respectively are
 - (a) red and blue.
 - (b) blue and red.
 - (c) pink and colourless.
 - (d) colourless and pink
5. Litmus, a natural dye is an extract of which of the following?
 - (a) China rose (Gudhal)
 - (b) Beetroot
 - (c) Lichen
 - (d) Blue berries (Jamun)



DIWALI & CHHATH PUJA

Holiday HW SESSION- 2025-26

CLASS -7

SCIENCE

7. A solution changes the colour of turmeric indicator from yellow to red. The solution is

- (a) basic
- (b) acidic
- (c) neutral
- (d) either neutral or acidic

8. Paheli is suffering from indigestion due to acidity. Is it advisable to give her orange juice in this situation and why?

9. While playing in a park, a child was stung by a wasp. Some elders suggested applying paste of baking soda and others lemon juice as remedy. Which remedy do you think is appropriate and why?

10. Match the substances in Column I with those in Column II.

(a) Tartaric acid	(i) soap
(b) Calcium hydroxide	(ii) curd
(c) Formic acid	(iii) unripe mangoes
(d) Sodium hydroxide	(iv) ant's sting
(e) Lactic acid	(v) lime water

11. You are provided with three test tubes A(tartaric acid), B (soap)and C(water) .

What will you observe when you put

- a. a piece of blue litmus paper in each test tube.
- b. a piece of red litmus paper in each test tube.
- c. a few drops of phenolphthalein solution to each test tube.

12. Paheli observed that most of the fish in the pond of her village were gradually dying. She also observed that the waste of a factory in their village is flowing into the pond which probably caused the fish to die.

- a. Explain why the fish were dying.
- b. If the factory waste is acidic in nature, how can it be neutralised?



DIWALI & CHHATH PUJA

Holiday HW
SESSION- 2025-26

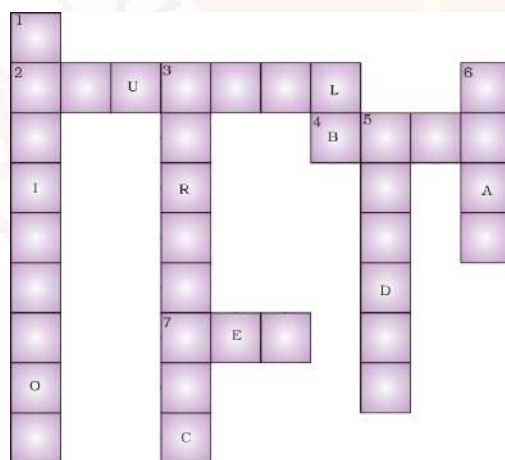
CLASS -7 SCIENCE

13. Fill in the cross word given as Figure 5.2 with the help of the clues provide
Across

- (2) The solution which does not change the colour of either red or blue litmus.
- (4) Phenolphthalein gives pink colour in this type of solution.
- (7) Colour of blue litmus in lemon juice.

Down

- (1) It is used to test whether a substance is acidic or basic.
- (3) It is a natural indicator and gives red colour in basic solution.
- (5) Nature of ant's sting.
- (6) It is responsible for increase in temperature during a neutralisation reaction



Activity

Make a greeting card with turmeric and detergent solution and paste in your copy.

Directions:

1. Take some turmeric powder in a bowl
2. add some water and make a paste
3. take one paper and apply this turmeric paste over it using some brush
4. keep the paper for some minutes to dry
5. dip a earbud in a detergent solution (base) and make any drawing on the turmeric paper. The drawing will appear in red colour..





DIWAL & CHHATH PUJA

Holiday HW

SESSION- 2025-26

CLASS -7

SOC.SC

1. Draw a colourful pamphlet/banner on an A4 sheet highlighting the ill effects of crackers on our health and environment. " Say no to Crackers ", " Clean Diwali Safe Diwali"
2. Learn and complete the chapters in CW and HW copy completed till 18.10.25 for UT-3 portion is Ch-6,7,14 and 21.

*Students are requested to complete their Telangana Jharkhand project if not submitted yet.

Famous Personalities*

Make a small comparison chart between:

1. Any one famous personality of Telangana (e.g., P.V. Sindhu, P.V. Narasimha Rao, Kaloji Narayana Rao)
2. Any one from Jharkhand (e.g., Birsu Munda, M.S. Dhoni, Arjun Munda).

Write: their field, achievements, impact, and what you learn from them.

Historical Places*

Collect pictures & write 4-5 lines on:

1. Two places from Telangana (e.g., Charminar, Golconda Fort)
2. Two places from Jharkhand (e.g., Jagannath Temple Ranchi, Maluti Temples).

Creative Work

This HHW is related to the Art integrated project comparing our two states Jharkhand and Telangana.

Do the work neatly as it carry marks.

Do the work on A4 coloured sheets and compile in a file.

(For those who have still not completed).